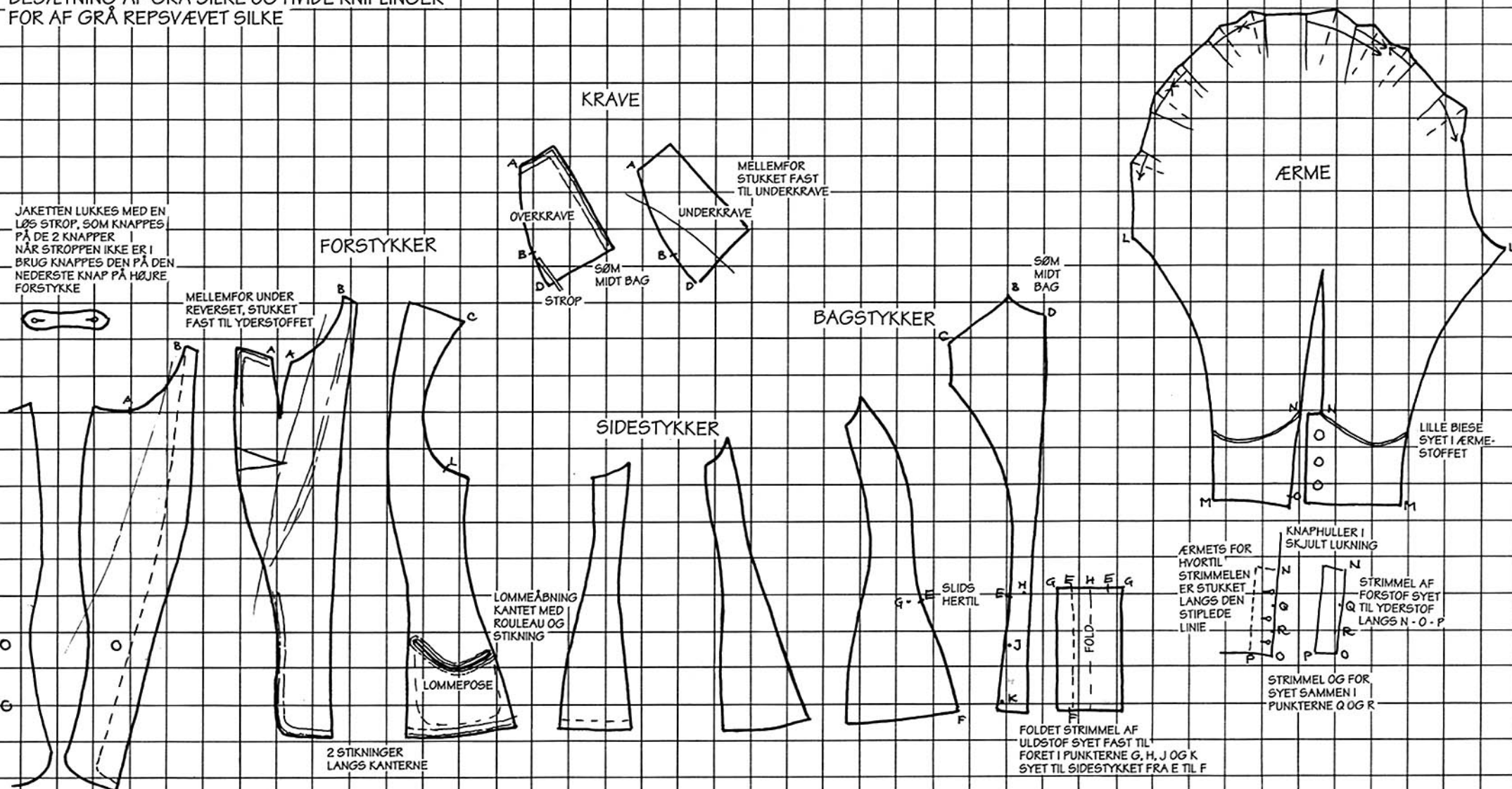


TAILOR-MADE 1896-98

MUS. NR. 586/1941

SPADSEREDRAGT BESTÅENDE AF
 JAKET, NEDERDEL OG KJOLELIV AF BLÅGRÅ KLÆDE
 BESÆTNING AF GRÅ SILKE OG HVIDE KNIPLINGER
 FOR AF GRÅ REPSVÆVET SILKE

JAKET

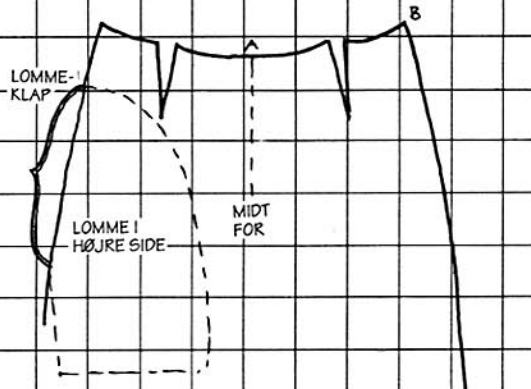
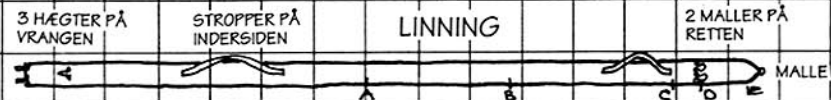


TEGNING 1 AF 3

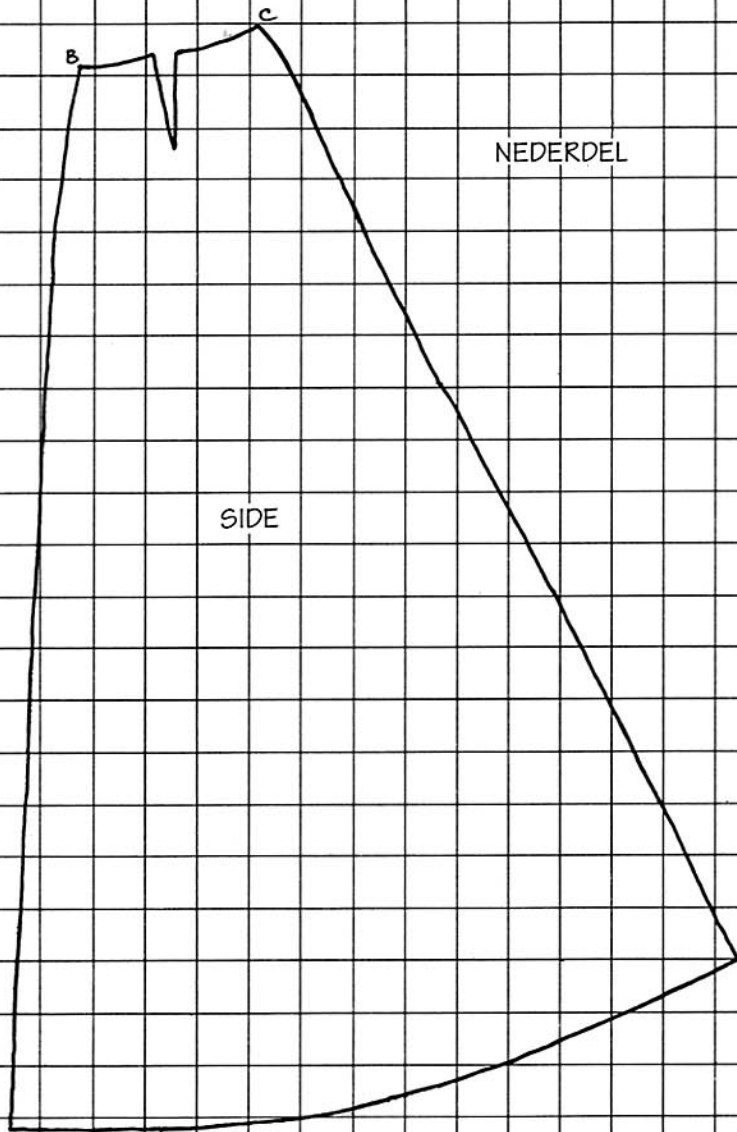
MÅL: 1 TERN = 5 CM

KAREN JACOBI 1993

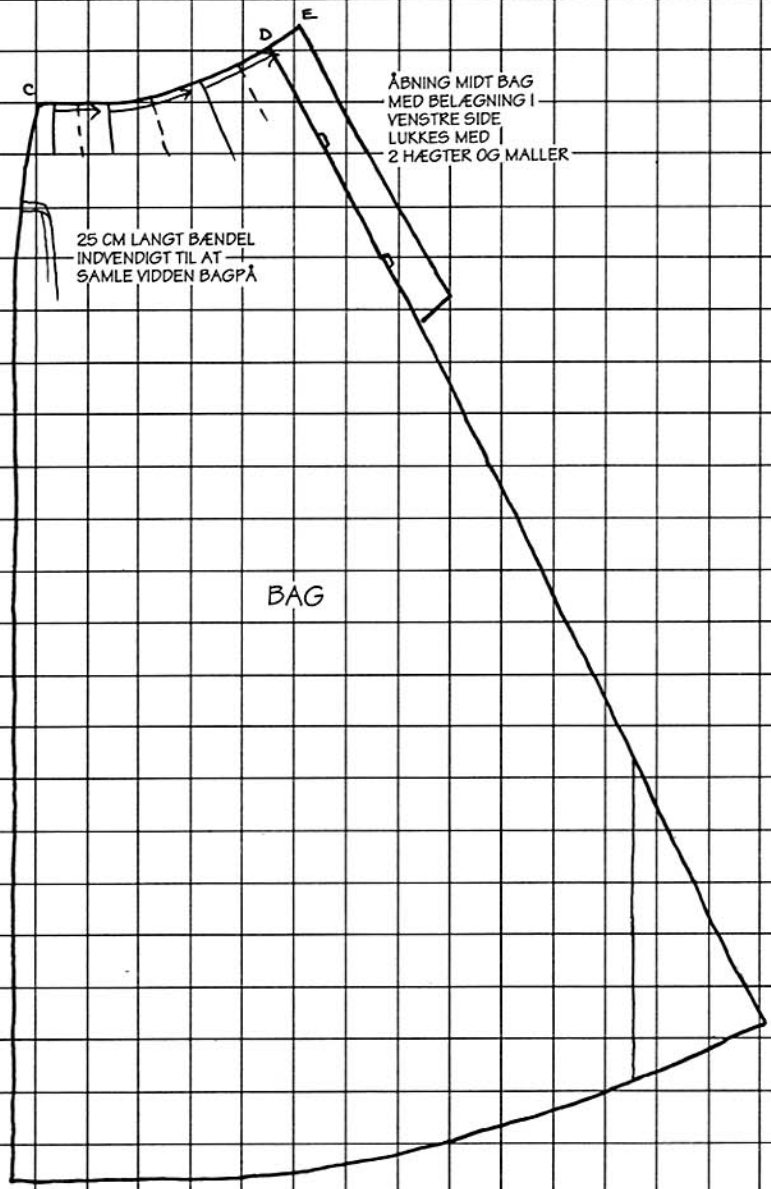
TAILOR-MADE 1896-98
MUS. NR. 586/1941



FOR



SIDE



BAG

2 SKONINGSBÅND FORNEDEN
PÅ VRANGEN

TEGNING 2 AF 3

MÅL: 1 TERN = 5 CM

KAREN JACOBI 1993

